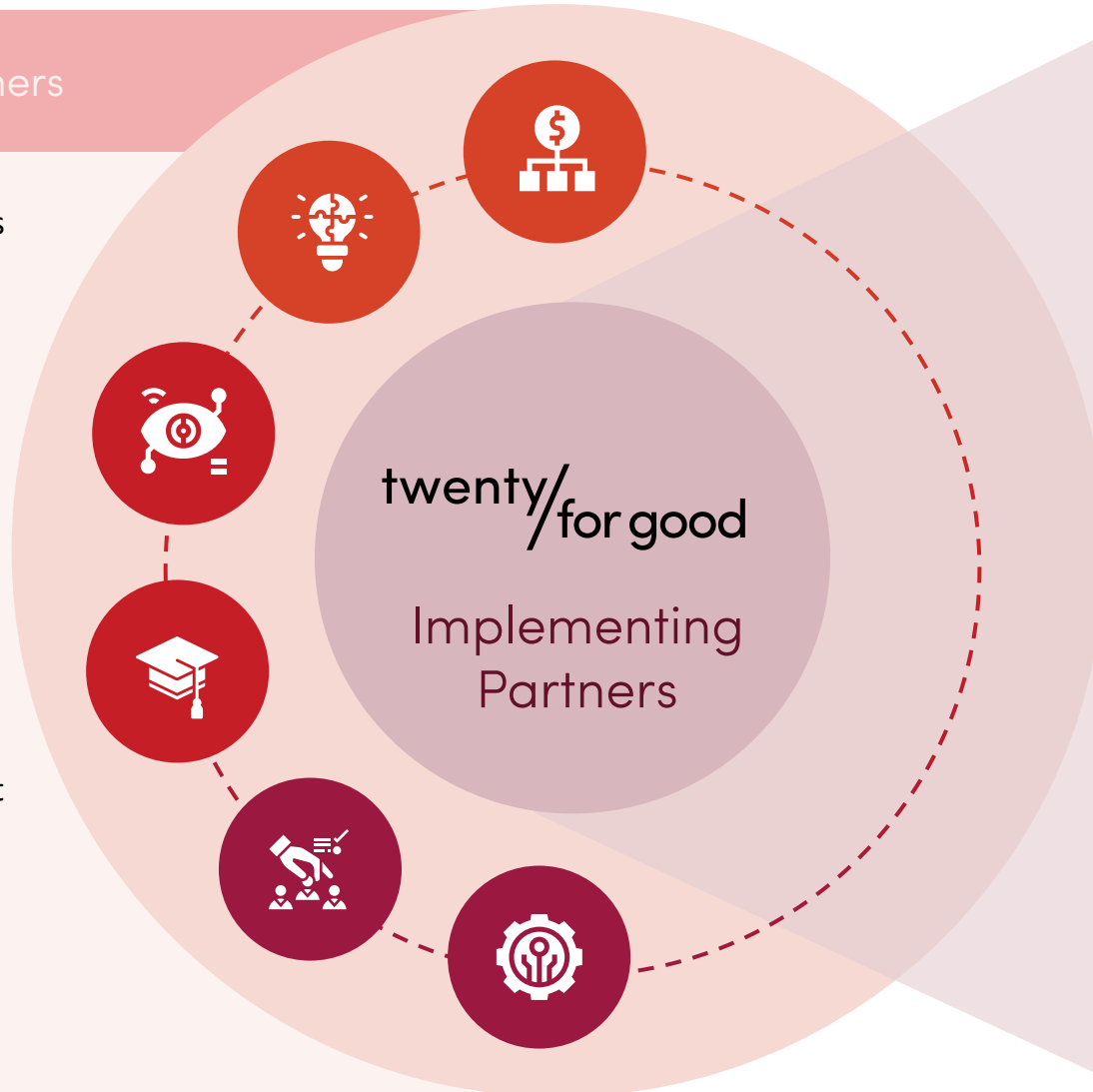


twenty/ for good

Examples of stakeholders and partners needed to deliver at scale

Executing Partners

Subject Matter Experts
Academia
Capacity Builders
Entrepreneurs
Innovators
Funders
Impact Investors
Accelerators
Government
Adjacent Development Partners
Multi-laterals
Corporates
Job-placement specialists



Core implementing partners

The interventions and activities outlined encompass a diverse set of skills and services that may not be found within a single organization. As such, a **fundamental implementing partnership structure** is essential for the establishment of TwentyforGood.

This compact assembly of **core capabilities** will necessitate the backing and involvement of a wide-ranging group of stakeholders, inclusive of executing partners.

Key partners would comprise of the Coordinating Organization, which will spearhead advocacy efforts and evidence gathering. Additionally, a Monitoring, Evaluation, and Learning (MEL) partner with localized MEL capabilities will be crucial. Other vital partners include a Fund Manager and an analytics and technical assistance firm with regional and thematic expertise.

These core partners will form the backbone of the initiative, ensuring its success and impact.